

## Hands free technique in hip dysplasia imaging – instructions for veterinarians

Position according to HD guidelines.

### **Positioning the dog (two people are needed for positioning):**

- The cradle is placed under the thorax and head area. A straight and symmetrical position of the whole dog (especially spine, thorax, and pelvis) is ensured and supported for instance by foam wedges or sandbags.
- A foam mattress is placed under the projected area which helps with positioning and also keeps the pelvis on the same level as the thorax.



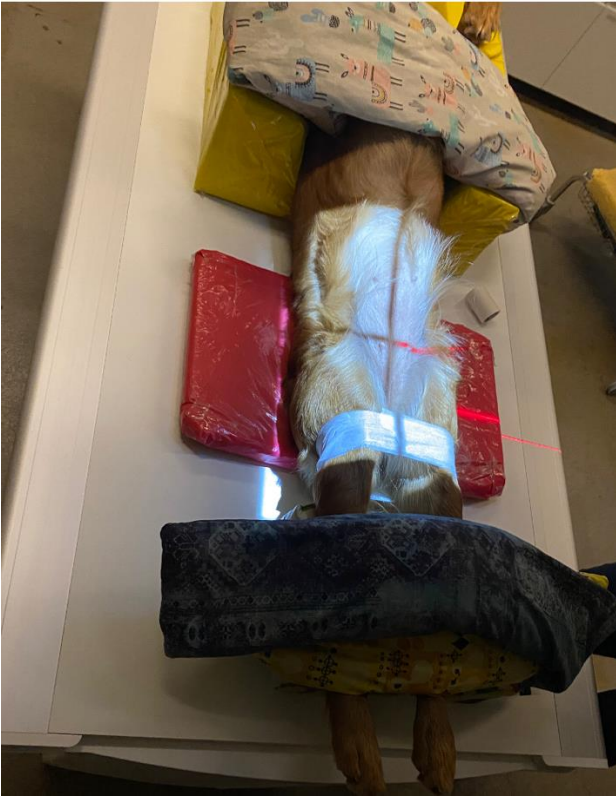
- A wide fibre tape works best around the legs; its adhesive texture makes it non-slippery, and it is also possible to fix the position without having to undo the taping.
- Before placing the tape, an assistant extends the legs: the limbs must be parallel to the table and parallel to each other – but also parallel with the lumbar spine. Stifles must not be flexed at all. Make sure by palpating that the patellae are centred.
- The assistant keeps the limbs in a correct position and another person wraps the tape tightly several times right above the stifles. To avoid support to hips, which could affect the result, the tape must not be placed any more proximally.



- Once the tape is placed, a foam cushion of suitable height is placed under the limbs, below tibiae and hocks, and the position is stabilized with sandbags and, if necessary, with tape pulled over the table and limbs. After this, the limbs can be released.



- The position is checked and corrected, if necessary.
- The image is centred and cropped in accordance with HD instructions



*Photos Vilma Reunanen and Liisa Lilja-Maula*